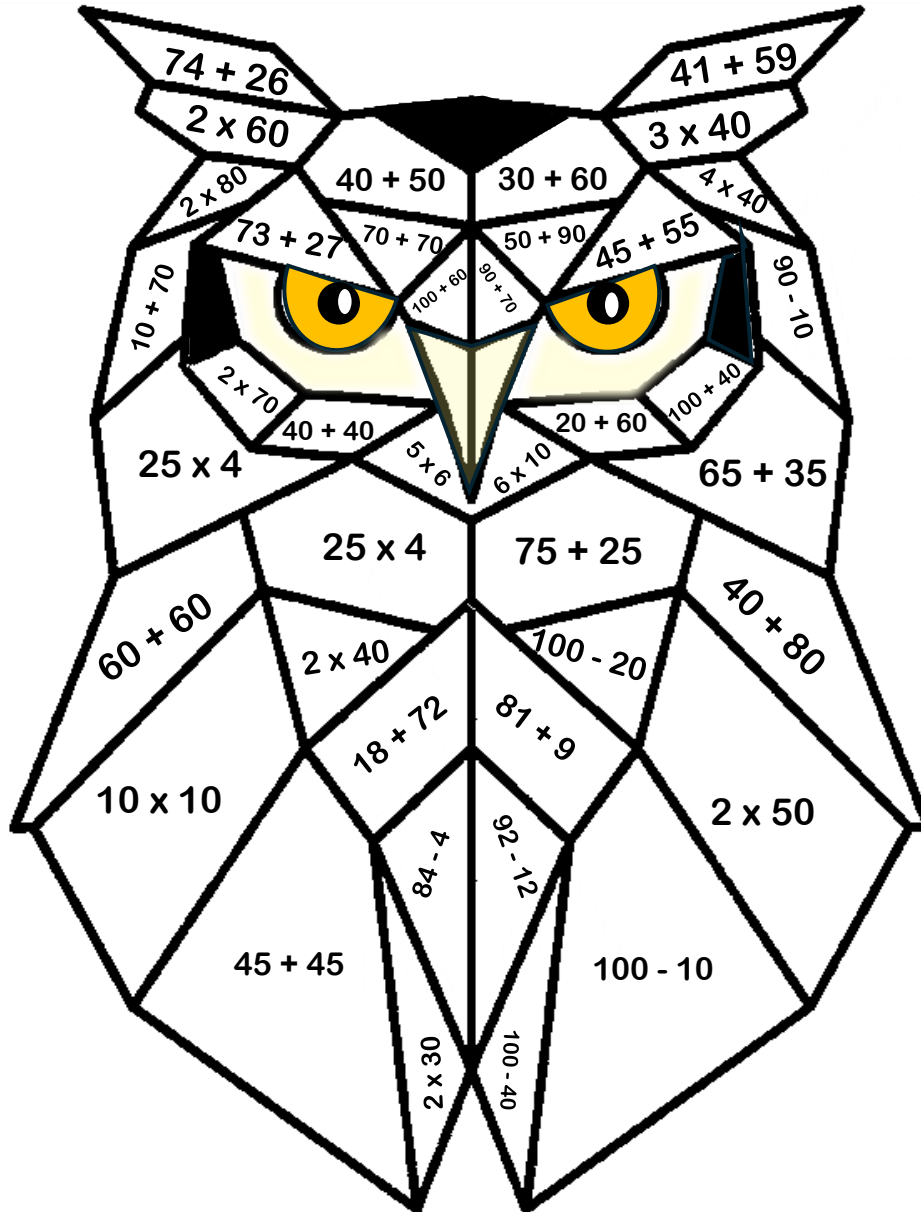


Les MATHS des ANIMAUX



90

100

120

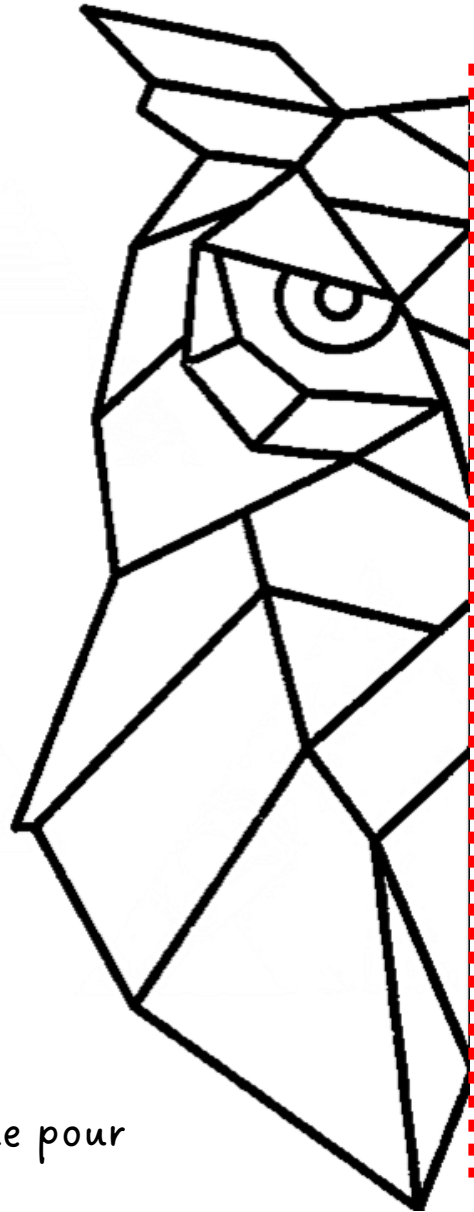
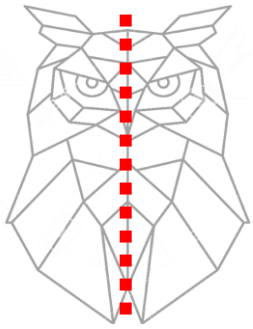
80

140

60

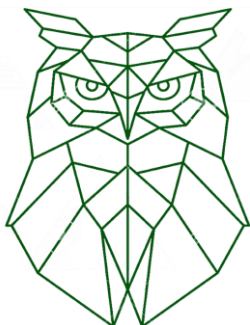
160

Les MATHS des ANIMAUX



Utilise du papier calque pour compléter le hibou.

Les MATHS des ANIMAUX



$39 - 25 = \dots$

$85 - 44 = \dots$

$45 - 24 = \dots$

$78 - 32 = \dots$

$89 - 27 = \dots$

$63 - 21 = \dots$

$79 - 57 = \dots$

$63 - 52 = \dots$



$74 + 26 = \dots$

$27 + 33 = \dots$

$12 + 28 = \dots$

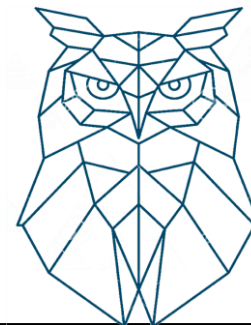
$25 + 9 = \dots$

$69 + 8 = \dots$

$87 + 6 = \dots$

$59 + 5 = \dots$

$77 + 8 = \dots$



$35 + 36 = \dots$

$62 + 19 = \dots$

$34 + 18 = \dots$

$14 + 19 = \dots$

$37 + 54 = \dots$

$48 + 18 = \dots$

$18 + 49 = \dots$

$58 + 26 = \dots$

Les MATHS des ANIMAUX



106

105

103



85

90

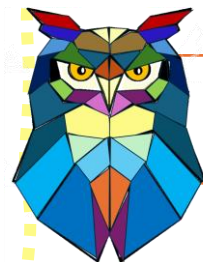
100



126

124

120

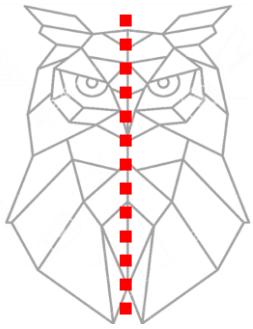


140

150

210

Les MATHS des ANIMAUX



Coloriage

